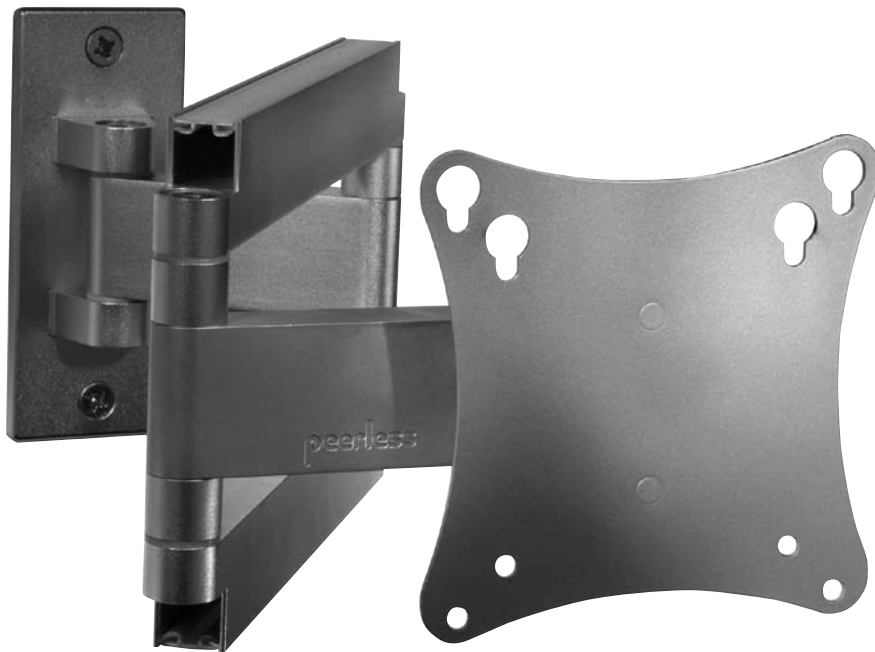


SmartMount™

Extended Reach Articulating Wall Arm for LCD Screens For 10" to 22" LCD Screens

NEW DESIGN

Patent Pending



Designed for areas where space is limited, the SmartMount Extended Reach Articulating Wall Arm is ideal. This three-link arm extends out to 19" offering limitless screen positioning even around corners and folds flat against the wall when the display is not in use. Its anodized aluminum finish complements offices, conference rooms or any room in the home while its internal cord management system neatly hides all cables and cords for a clean, clutter-free installation. For easy installation, this mount comes completely pre-assembled with all necessary mounting and screen attachment hardware.

- Fits 10" to 22" LCD screens
- Pivots and articulates in virtually all directions, even around corners and cabinets
- Frees up space by folding flat against the wall
- Keeps electronic wires routed internally to reduce clutter

SAL730P, SAL730P-S



SmartMount™

Extended Reach Articulating LCD Wall Arm For 10" to 22" LCD Screens

Model Numbers

SAL730P, SAL730P-S

Product Specifications

- Fits 10" to 22" LCD screens
- Pre-assembled for fast and easy installation
- Comes with VESA® 75/100 screen adapter plate
- Non-VESA adapter plates available (sold separately)
- Four pivot points for virtually limitless adjustments
- ±35° of tilt and ±7° of roll for flexible viewing positions
- Offers 180° of swivel on a wall and up to 270° of swivel around the side of a cabinet or corner
- Anodized aluminum finish available in black or silver
- Built-in internal cord management conceals wires for a clean look
- Includes hardware for installation to the side of a cabinet and to a single wood stud or concrete



FEATURES

DIMENSIONS (D)

Closed: 2.36" (6 cm)
Extended: 19.11" (48.5 cm)

LOAD CAPACITY

25 lb (11.4 kg)

PRODUCT WEIGHT

3.3 lb (1.5 kg)

FINISH

Anodized Aluminum

AVAILABLE COLORS

Black, SAL730P
Silver, SAL730P-S

ACCESSORIES

Metal Stud Wall Accessory Kit (ACC908)
Security Screen Fasteners (ACC918)

PATENTED

Patent Pending



Built-in internal cord management channels

Package Specifications

Adjustable Arm, VESA Screen Adapter Plate, Mounting Hardware

1

PACKAGE SIZE (L x W x H)

12.25" x 6.25" x 3.25" (31.25 x 15.87 x 8.25 cm)

PACKAGE SHIP WEIGHT

3.9 lb (1.8 kg)

PACKAGE UPC CODE

SAL730P 735029237730
SAL730P-S 735029237747

WARRANTY

Limited 5-year



LIT-0118 rev.1

Peerless Industries, Inc.
3215 W. North Avenue,
Melrose Park, IL 60160

(800) 865-2112
(708) 865-8870

Fax: (708) 865-2941

www.peerlessmounts.com

Visit peerlessmounts.com to see the full line of Peerless LCD/plasma, projector and TV/monitor mounts.

© 2006 Peerless Industries, Inc. All rights reserved.
SmartMount is a trademark and Peerless is a registered trademark of Peerless Industries, Inc.
All other brands, product names and taglines are trademarks or registered trademarks of their respective owners.